



BRIDGING THE GAP THROUGH SCIENCE, COLLABORATION AND TRANSPARENCY

William Feehery, President, DuPont Industrial Biosciences

Agrivision | June 17, 2015



Our Areas of Focus

As the global population climbs up to 9 billion people in 2050, DuPont uses its science-powered innovation to help solve the challenges facing the world, with a focus on:



FOOD



ENERGY



PROTECTION

Food security is one of the greatest challenges of the 21st century.



Overview of the Global Food Security Index (GFSI)

Indexing three core issues in 109 countries



Affordability



Availability



Quality and Safety

Most improved countries in 2015 gained across a range of factors



More extensive
food safety-net
programmes



Expanded crop
storage capacity



Lower levels of
food loss



Increased diet
diversification



Better access
to quality
protein sources



BRIDGING THE GAP

Through science, collaboration and transparency



EFFICIENCY



PRODUCTIVITY



ENVIRONMENTAL
IMPACT

BETTER ACCESS TO
QUALITY PROTEIN SOURCES



We Invite Collaboration in Our Innovation Centers


13 DuPont Innovation Centers

- Paulínia, Brazil
- Mexico City, Mexico
- Johnston, United States
- Troy, United States
- Moscow, Russia
- Meyrin, Switzerland
- Istanbul, Turkey
- Hsinchu, Taiwan
- Bangkok, Thailand
- Pune, India
- Nagoya, Japan
- Seoul, South Korea
- Shanghai, China

GMO Answers



← → ↻ https://gmoanswers.com ☆ ☰

 **ASK**
YOUR QUESTIONS

EXPLORE
THE BASICS


STUDIES
AND ARTICLES

DIG
DEEPER



ABOUT
GMO ANSWERS

Search Entire Site **GO**

[login]



Make Informed Decisions About What You Eat



WE ANSWER YOUR QUESTIONS ABOUT GMOS



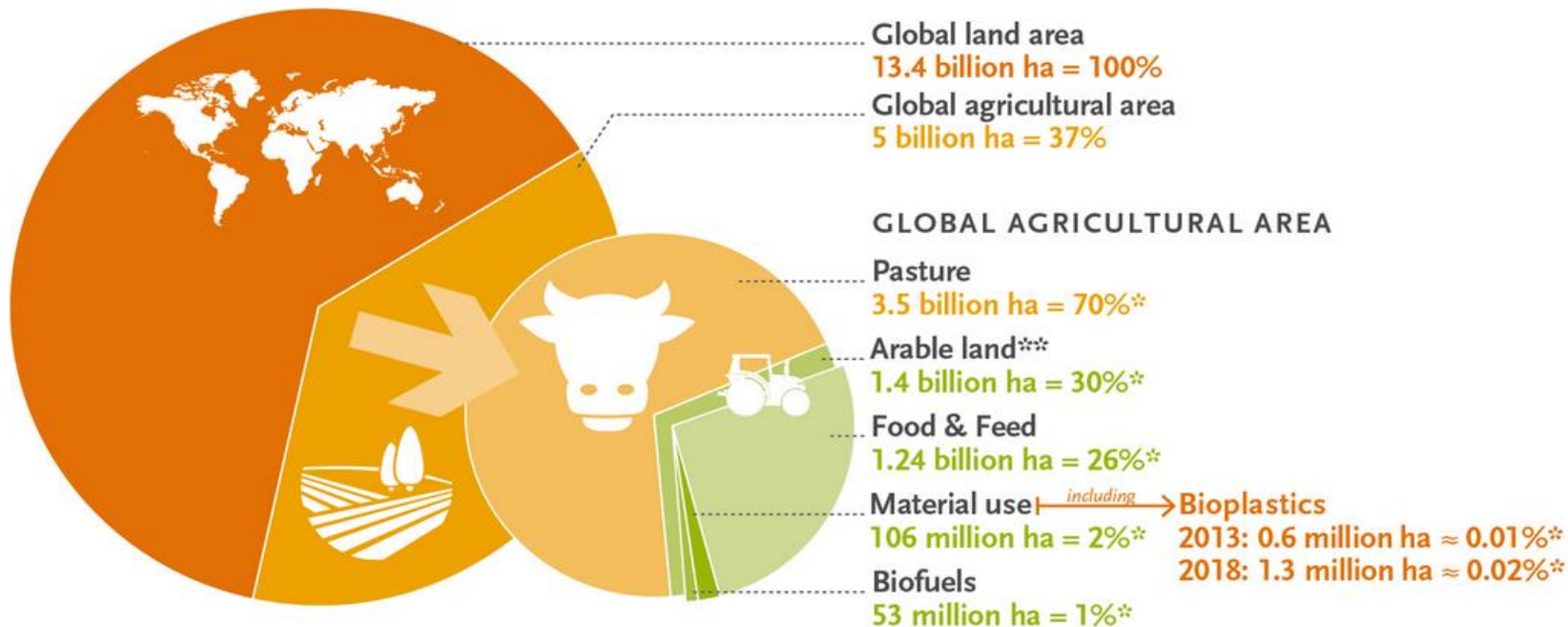
Energy security is one of the greatest challenges of the 21st century.



1% of Global Agricultural Area is used for Biofuels



Land use for bioplastics 2013 and 2018



Source: European Bioplastics, Institute for Bioplastics and Biocomposites, nova-Institute (2014)
More information: www.bio-based.eu/markets and www.downloads.ifbb-hannover.de

* In relation to global agricultural area
** Also includes approx. 1% fallow land

30 million gallons
annually from
corn stover

DUPONT®



WE'RE SOLVING THE WORLD'S GREATEST CHALLENGES

TOGETHER

INGENUITY

COLLABORATION

PASSION

WELCOME TO
THE GLOBAL
COLLABORATORY